

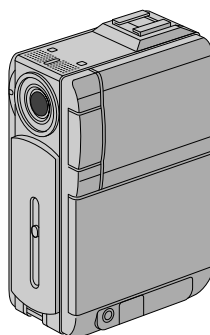
JVC

SCHEMATIC DIAGRAMS

DIGITAL VIDEO CAMERA

GR-DVP3UM

CD-ROM No.SML200110



Mini DV NTSC
DSC
DIGITAL
STILL CAMERA

Regarding service information other than these sections, refer to the GR-DVP3U service manual (No. 86628). Also, be sure to note important safety precautions provided in the service manual.

SPECIFICATIONS *(The specifications shown pertain specifically to the model GR-DVP3U)*

Camcorder

For General

Power supply	: DC 6.3 V \equiv (Using AC Power Adapter/Charger) DC 7.2 V \equiv (Using battery pack)
Power consumption	
LCD monitor off, viewfinder on	: Approx. 4.1 W
LCD monitor on, viewfinder off	: Approx. 5.0 W
Dimensions (W x H x D)	: 43 mm x 115 mm x 80 mm (1-3/4" x 4-9/16" x 3-1/16") (with the LCD monitor closed and the viewfinder pushed back in)
Weight	: Approx. 340 g (0.75 lbs) (without grip belt, battery and cassette) Approx. 410 g (0.91 lbs) (incl. grip belt, battery and cassette)
Operating temperature	: 0°C to 40°C (32°F to 104°F)
Operating humidity	: 35% to 80%
Storage temperature	: -20°C to 50°C (-4°F to 122°F)
Pickup	: 1/4" CCD
Lens	: F 1.8, f = 3.7 mm to 37 mm, 10:1 power zoom lens (It is not possible to attach any lens filter or conversion lens.)
LCD monitor	: 2" diagonally measured, LCD panel/TFT active matrix system
Viewfinder	: Electronic viewfinder with 0.44" color LCD
Speaker	: Monaural

For Digital Video Camera

Format	: DV format (SD mode)
Signal format	: NTSC standard
Recording/Playback format	: Video: Digital component recording Audio: PCM digital recording, 32 kHz 4-channel (12-bit), 48 kHz 2-channel (16-bit)
Cassette	: Mini DV cassette
Tape speed	: SP: 18.8 mm/s LP: 12.5 mm/s
Maximum recording time (using 80 min. cassette)	: SP: 80 min. LP: 120 min.

For Digital Still Camera

Storage media	: SD Memory Card/MultiMediaCard
Compression system	: Still image : JPEG (compatible) Moving image : MPEG4 (compatible)
File size	: 2 modes (XGA: 1024 x 768 pixels/VGA: 640 x 480 pixels)
Picture quality	: 2 modes (FINE/STANDARD)
Approximate number of storable images (with the provided memory card [8 MB], with Sound Effects pre-stored)	
FINE	: 37 (VGA), 16 (XGA)
STANDARD	: 105 (VGA), 51 (XGA)

For other memory cards, see pg. 17.

For Connectors

AV	
Video output	: 1 V (p-p), 75 Ω , analog
Audio output	: 300 mV (rms), 1 k Ω , analog, stereo
DV	
Input/output	: 4-pin, IEEE 1394 compliant

AC power adapter/charger AA-V100U

Power requirement	
U.S.A. and Canada	: AC 120 V \sim , 60 Hz
Other countries	: AC 110 V to 240 V \sim , 50 Hz/60 Hz
Power consumption	: 23 W
Output	
Charge	: DC 7.2 V \equiv , 1.2 A
VTR	: DC 6.3 V \equiv , 1.8 A
Dimensions (W x H x D)	: 68 mm x 44 mm x 110 mm (2-11/16" x 1-3/4" x 4-3/8")
Weight	: Approx. 255 g (0.57 lbs)

Docking Station CU-V507U

For General

Dimensions (W x H x D)	: 48.4 mm x 36 mm x 79 mm (1-15/16" x 1-7/16" x 3-1/8")
Weight	: Approx. 53 g (0.12 lbs)

For Connectors

PHONE	
Headphone output	: ϕ 3.5 mm, stereo
USB	: TYPE B
S-VIDEO OUT	: Y: 1 V (p-p), 75 Ω , analog output C: 0.29 V (p-p), 75 Ω , analog output
EDIT	: ϕ 3.5 mm, 2-pole

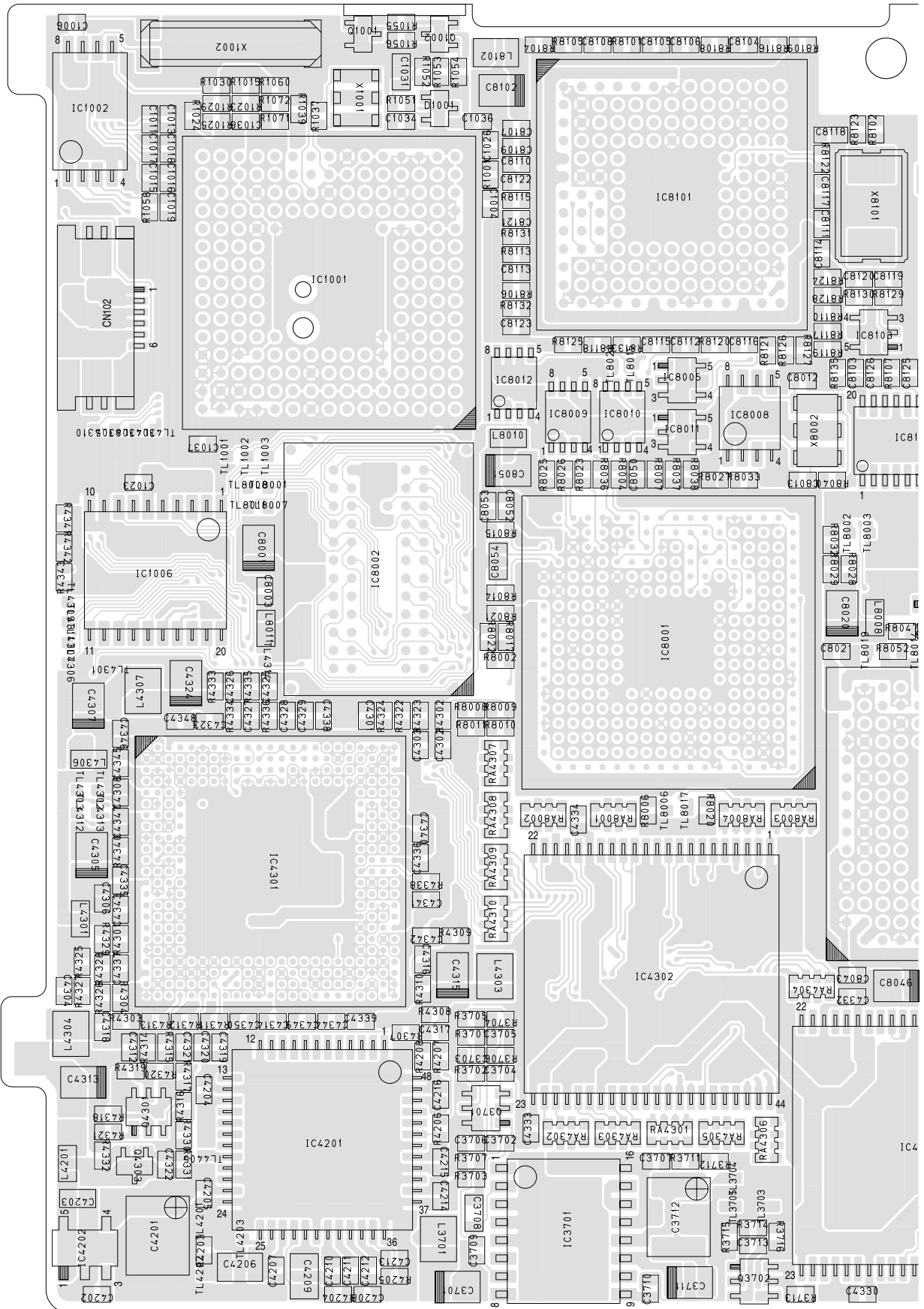
Specifications shown are for SP mode unless otherwise indicated. E & O.E. Design and specifications subject to change without notice.

SECTION 4 CHARTS AND DIAGRAMS

4.1 MAIN CIRCUIT BOARD

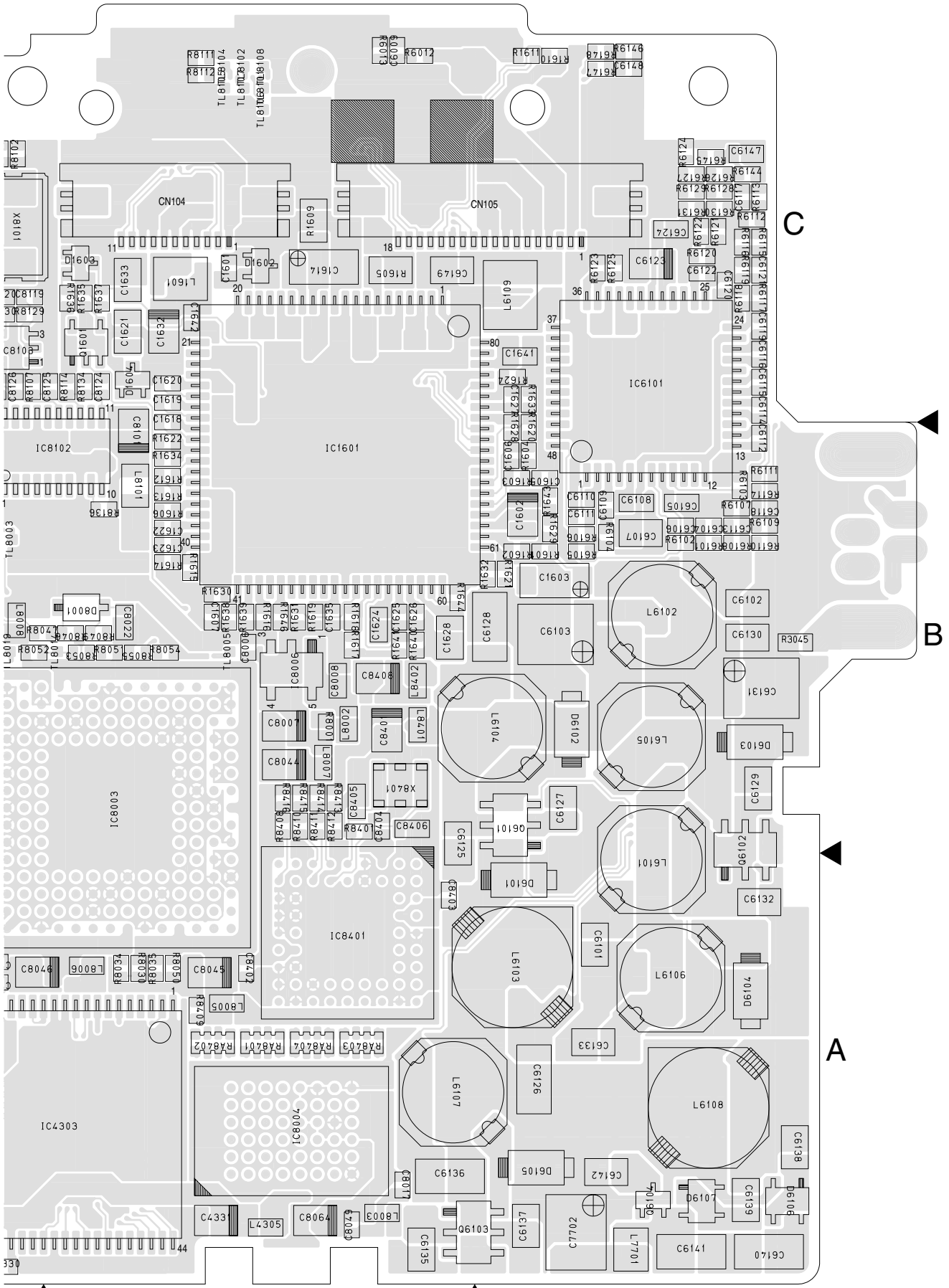
01 MAIN PWB
YB10327-01-02

FOIL SIDE(B)



1

2



C

B

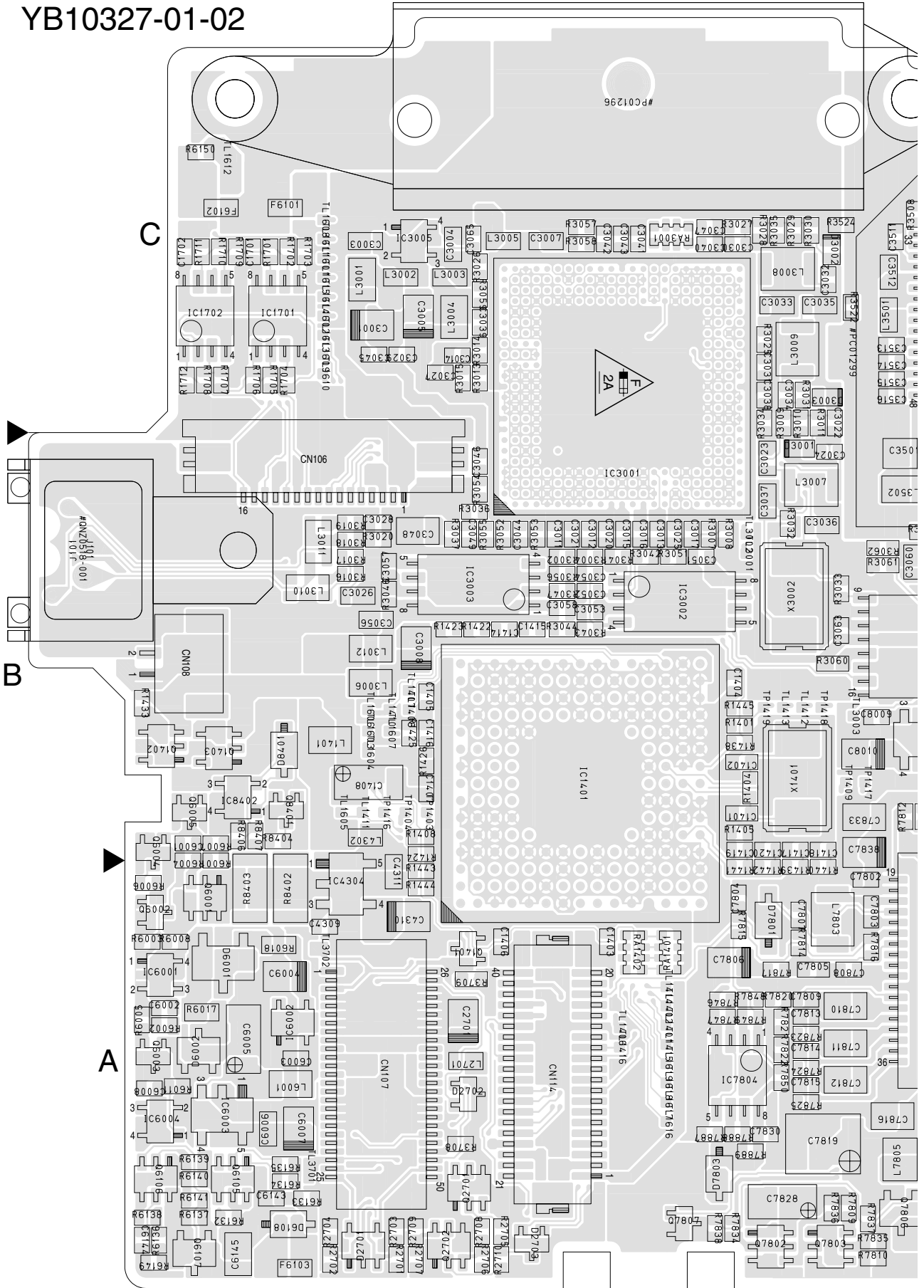
A

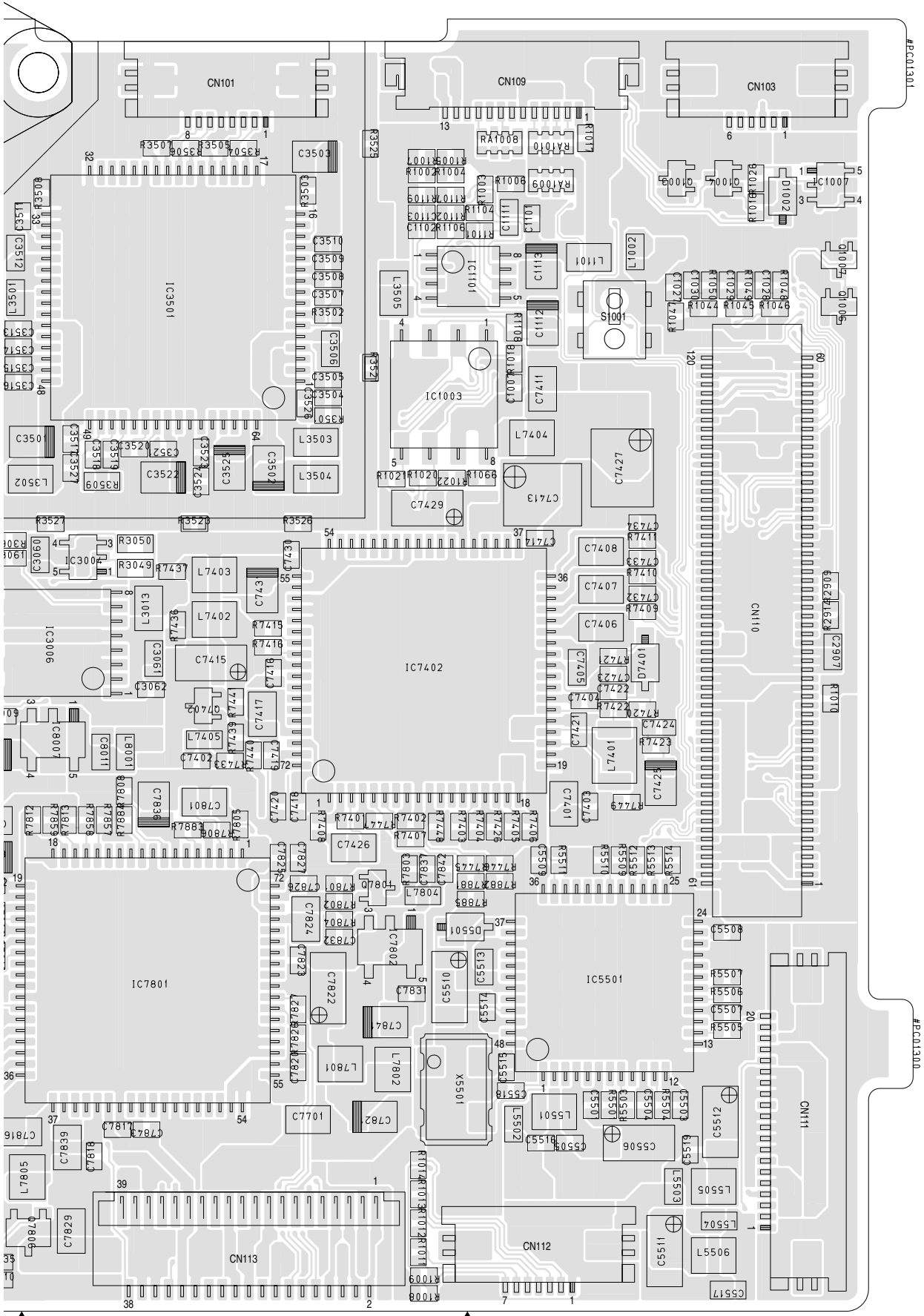
3

4

01 MAIN PWB
YB10327-01-02

COMPONENT SIDE(A)





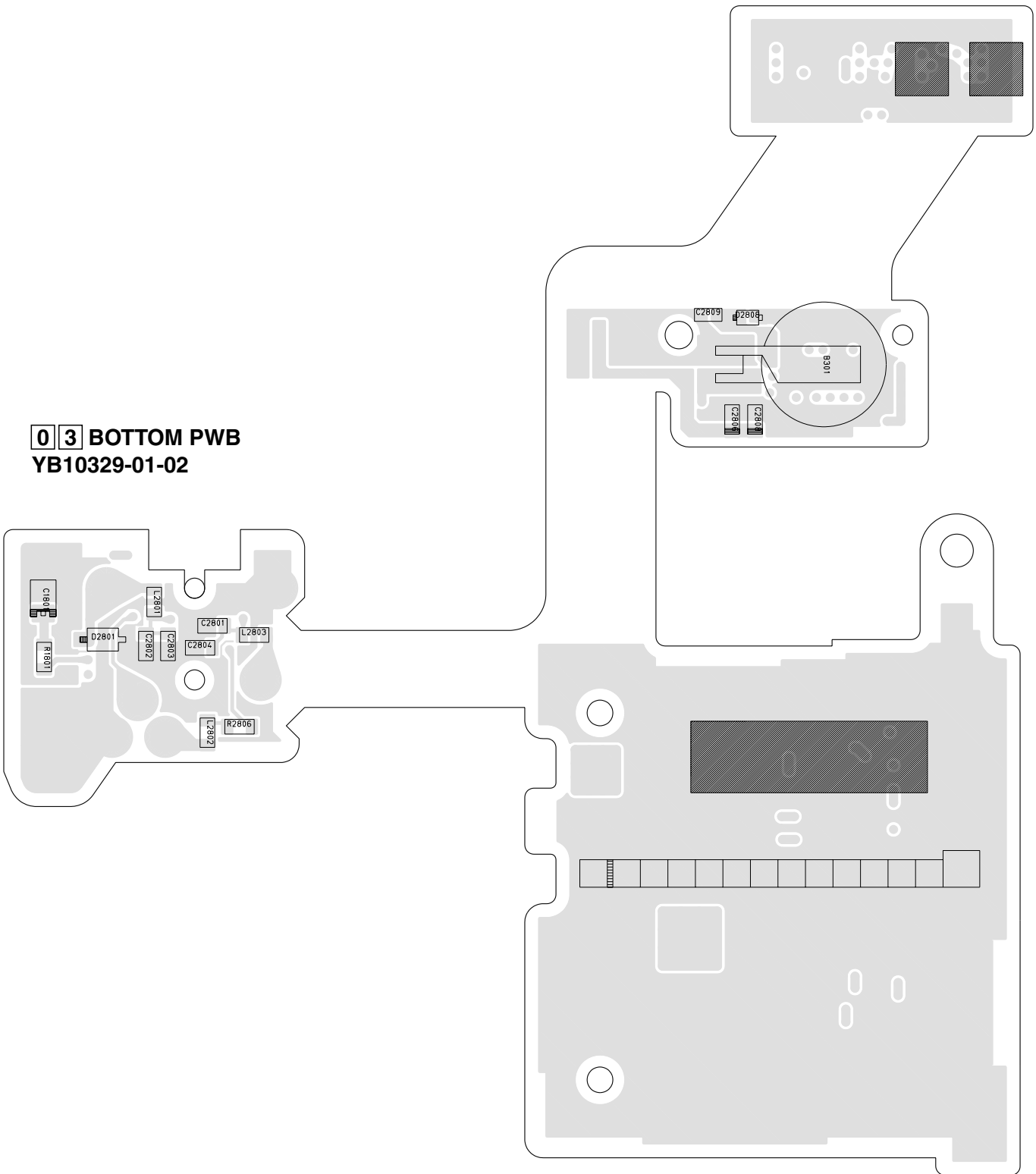
2

1

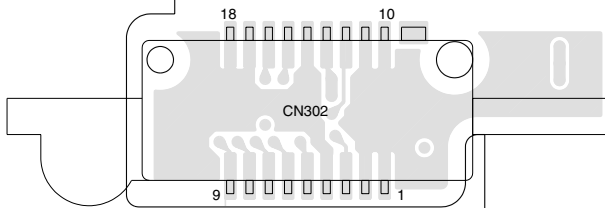
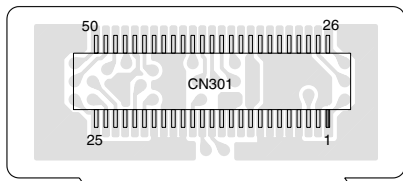
4.2 BOTTOM CIRCUIT BOARD

FOIL SIDE(B)

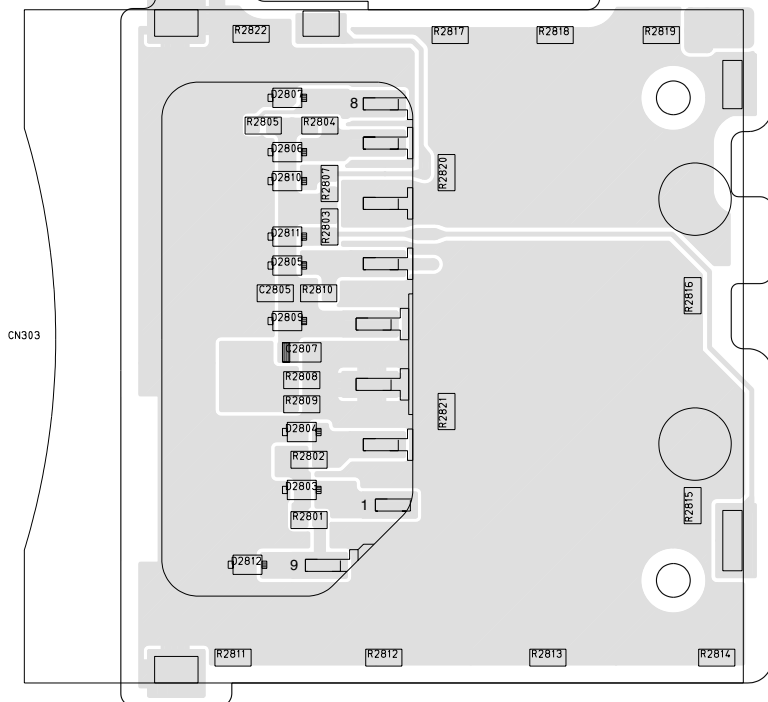
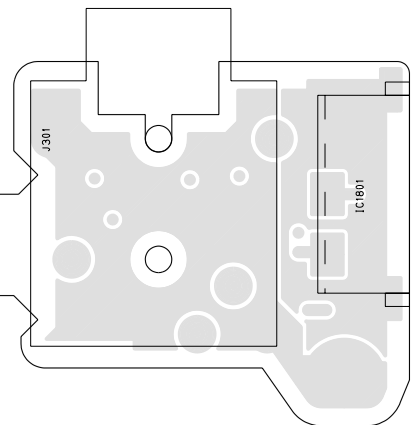
0 3 BOTTOM PWB
YB10329-01-02



COMPONENT SIDE(A)



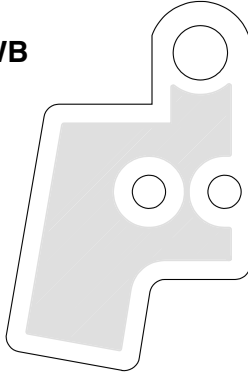
03 BOTTOM PWB
YB10329-01-02



4.3 EJECT CIRCUIT BOARD

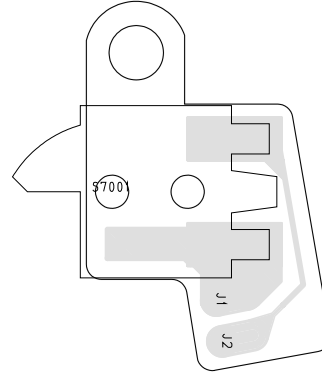
FOIL SIDE(B)

0 6 EJECT PWB
YB10329-01-02



COMPONENT SIDE(A)

0 6 EJECT PWB
YB10329-01-02





JVC

VICTOR COMPANY OF JAPAN, LIMITED
VIDEO DIVISION

S40894